

## AG039: Demo Board for AxLxxx-14E Nanopower Magnetic Sensors

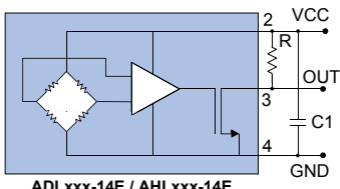
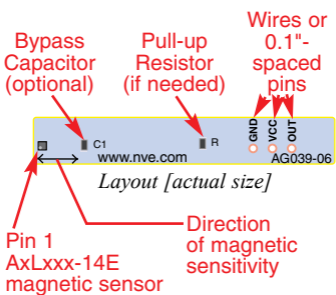
These boards are for NVE ADLxxx-14E and AHLxxx-14E 1.1 mm ULLGA Nanopower Magnetic Switches. Included are:

- A 0.25 x 1.57 inch (6 x 40 mm) circuit board;
- Pads for soldering an AxLxxx-14E ULLGA sensor;
- Vcc, GND, and Output connections; and
- Locations for optional 0402-size pull-up resistor and bypass capacitor.

ADLxxx-14E/AHLxxx-14E features are:

- Ultraminiature (1.1 mm x 1.1 mm x 0.45 mm)
- Power as low as nanowatts
- 2.4 – 3.6 V (ADLxxx) or 0.9 – 2.4 V (AHLxxx)
- Operate points as low as 10 Oe.

A pull-up resistor may be required since sensor outputs are open-drain, (note maximum output current is 100  $\mu$ A). A typical bypass capacitor is 10 nF if needed for noisy supplies.



*Schematic*

SB-00-071