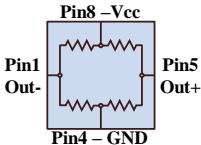


AAL002-02E-EVB01

NVELink 

Approximate Dimensions:
22.2 x 10.7 x 1.6 mm



Pin2 - NC
Pin3 - NC
Pin6 - NC
Pin7 - NC



Card-Edge Connections

Vcc
GND
NC
NC
NC
NC
NC
NC

← Front Back →
1.0 mm pitch



AAL002-02E GMR Magnetometer

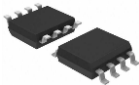
- 36 mV/V/mT sensitivity
- 0.15 to 1.05 mT linear range
- 125 °C operating temperature
- 5.5 k Ω resistance

sensor-apps@nve.com

nve.com

+1 952 829 9217

GMR Sensors
*Manufactured in
Eden Prairie,
Minnesota, USA*



*Download the
product datasheet* →

